

Inter-disciplinary administration, dispensing & distribution of intramuscular naloxone across multiple programs

Jessica Bridgeman, RPN BSPN – Regional Harm Reduction Coordinator

Paula Araujo, RN, BScN, MSc Health Informatics, PMP – Regional Practice Leader

Jacqueline MacKinnon, RSW – Regional Knowledge Coordinator

Kathy Williams – Director, Professional Practice

May 2018



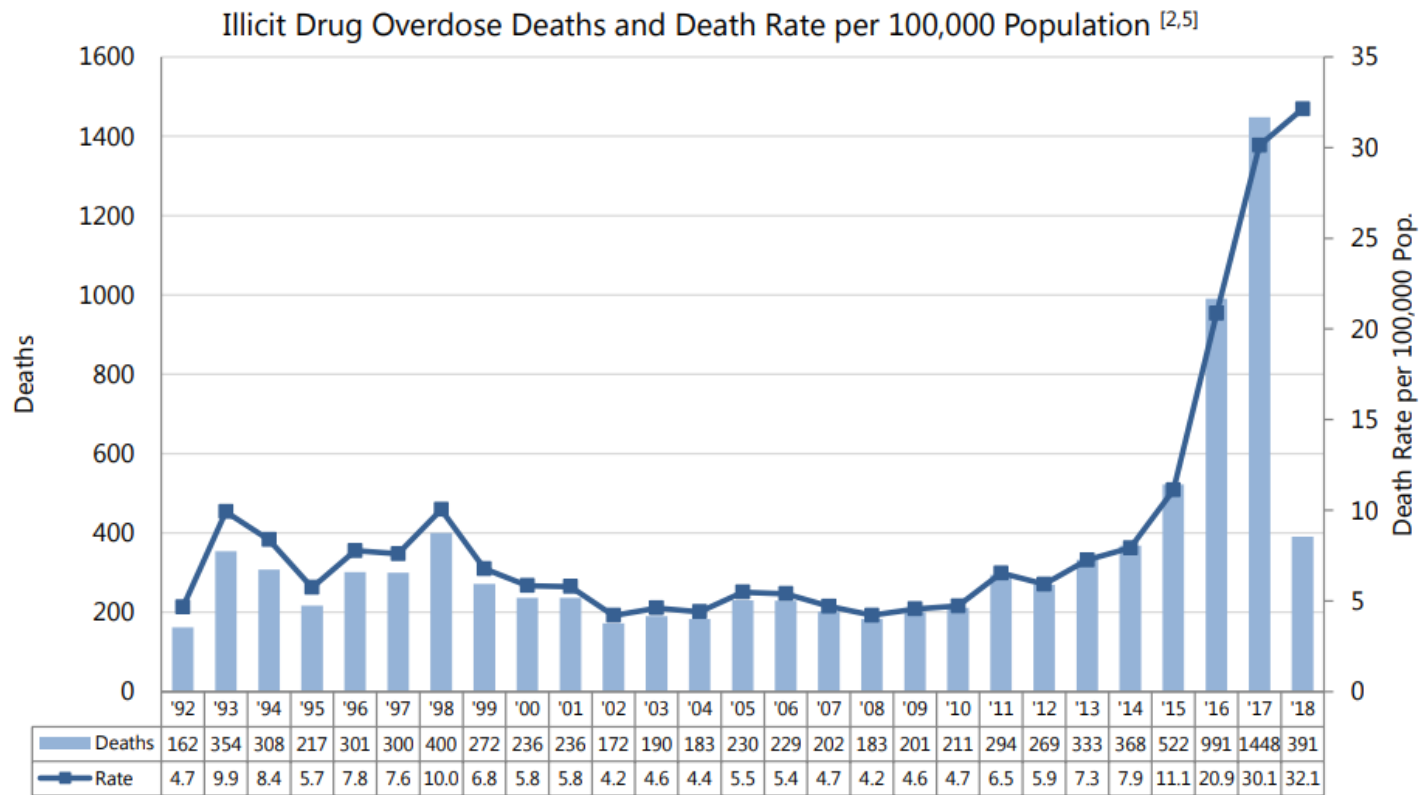
Interior Health
Every person matters

Land Acknowledgement

I would like to begin by acknowledging that the land on which we gather is the traditional and unceded territory of the Kanien'keha:ka (Mohawk), a place which has long served as a site of meeting and exchange amongst nations.

Public Health Emergency - Overdose

BC Data and Rates



BC Coroners Service. Illicit Drug Overdose Deaths in BC, January 1, 2007 – March 31, 2018.
 Data are preliminary and subject to change.

Interior Health Authority

Health Authority Data:

Illicit Drug Overdose Deaths by Health Authority, 2008-2018^[2,4,6]

HA	2008	2009	2010	2011	2012	2013	2014	2015	2016	2017	2018
Interior	22	35	37	38	31	54	47	63	167	240	65
Fraser	65	58	86	115	104	106	126	209	329	482	121
Vancouver Coastal	47	69	52	81	72	95	119	159	279	435	110
Vancouver Island	43	33	23	44	44	59	55	66	165	233	73
Northern	6	6	13	16	18	19	21	25	51	58	22
BC	183	201	211	294	269	333	368	522	991	1,448	391

Illicit Drug Overdose Death Rates by Health Authority per 100,000, 2008-2018^[4-7]

HA	2008	2009	2010	2011	2012	2013	2014	2015	2016	2017	2018
Interior	3.1	4.9	5.2	5.3	4.3	7.5	6.4	8.5	22.5	32.0	34.4
Fraser	4.2	3.7	5.3	7.0	6.2	6.3	7.4	12.0	18.5	26.6	26.3
Vancouver Coastal	4.4	6.3	4.7	7.3	6.4	8.4	10.4	13.7	23.9	36.9	36.9
Vancouver Island	5.9	4.5	3.1	5.9	5.8	7.8	7.2	8.6	21.2	29.7	36.8
Northern	2.1	2.1	4.6	5.7	6.3	6.6	7.3	8.8	18.2	20.5	30.8
BC	4.2	4.6	4.7	6.5	5.9	7.3	7.9	11.1	20.9	30.1	32.1

BC Coroners Service. Illicit Drug Overdose Deaths in BC, January 1, 2007
– March 31, 2018.

Data are preliminary and subject to change.

Key Priorities – Fall 2016

- * **Naloxone expansion**
- * Supervised Consumptions Services (SCS)
- * Substance use services and treatment for people who use drugs (PWUD)
- * Surveillance monitoring
- * Communications & media campaigns

Naloxone

What we had:

- * Take Home Naloxone Program (BCCDC, 2012)
- * All public health, mental health & substance use and primary care sites dispensing THN kits – **nurses only**
- * Naloxone available as Schedule II medication (dispensed in pharmacies, without prescription; dispensed by nurses)
 - * **Changed to “unscheduled”, fall 2016**
- * Regulatory colleges support
- * Changes to Health Professions General Regulations Act



Naloxone

Gaps:

- * No policy/procedure for staff to **administer** naloxone without an order
- * No policy/procedure for Allied health staff and unregulated care providers to **distribute** naloxone
- * Staff encountering overdoses in a variety of settings
- * Lack of standardized training

An Interdisciplinary Approach



Clinical Decision Support Tools

- * Suspected opioid overdose response protocol: non-hospital settings
- * Distribution and dispensing of Take Home Naloxone kits

Administration algorithm

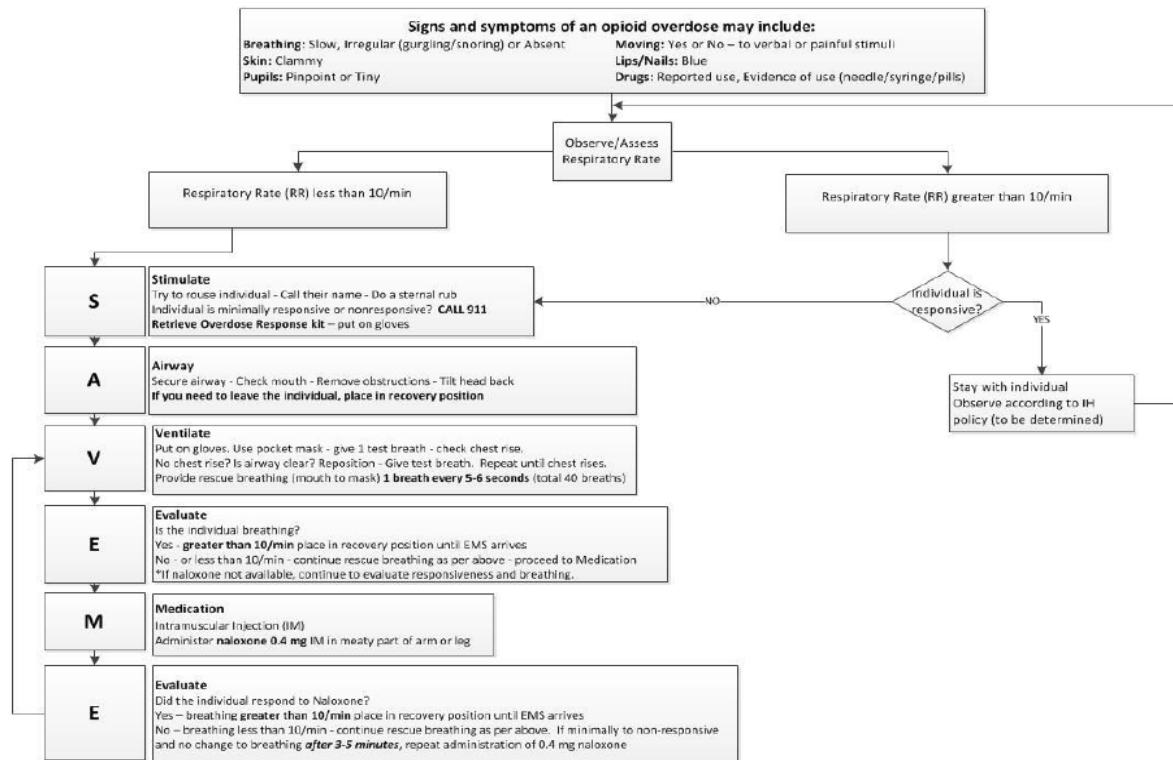


Interior Health

General Interprofessional Practices

Protocol

APPENDIX 2 Suspected Opioid Overdose Response Protocol Algorithm – Regulated and Unregulated Care Providers (Non-Hospital Setting)



Adapted from BCCDC (2016) Naloxone Administration DST Algorithm (with permission)

Learning Modules

Overdose Prevention & Response



Overview and
Background

Naloxone Administration in Non-Hospital Settings



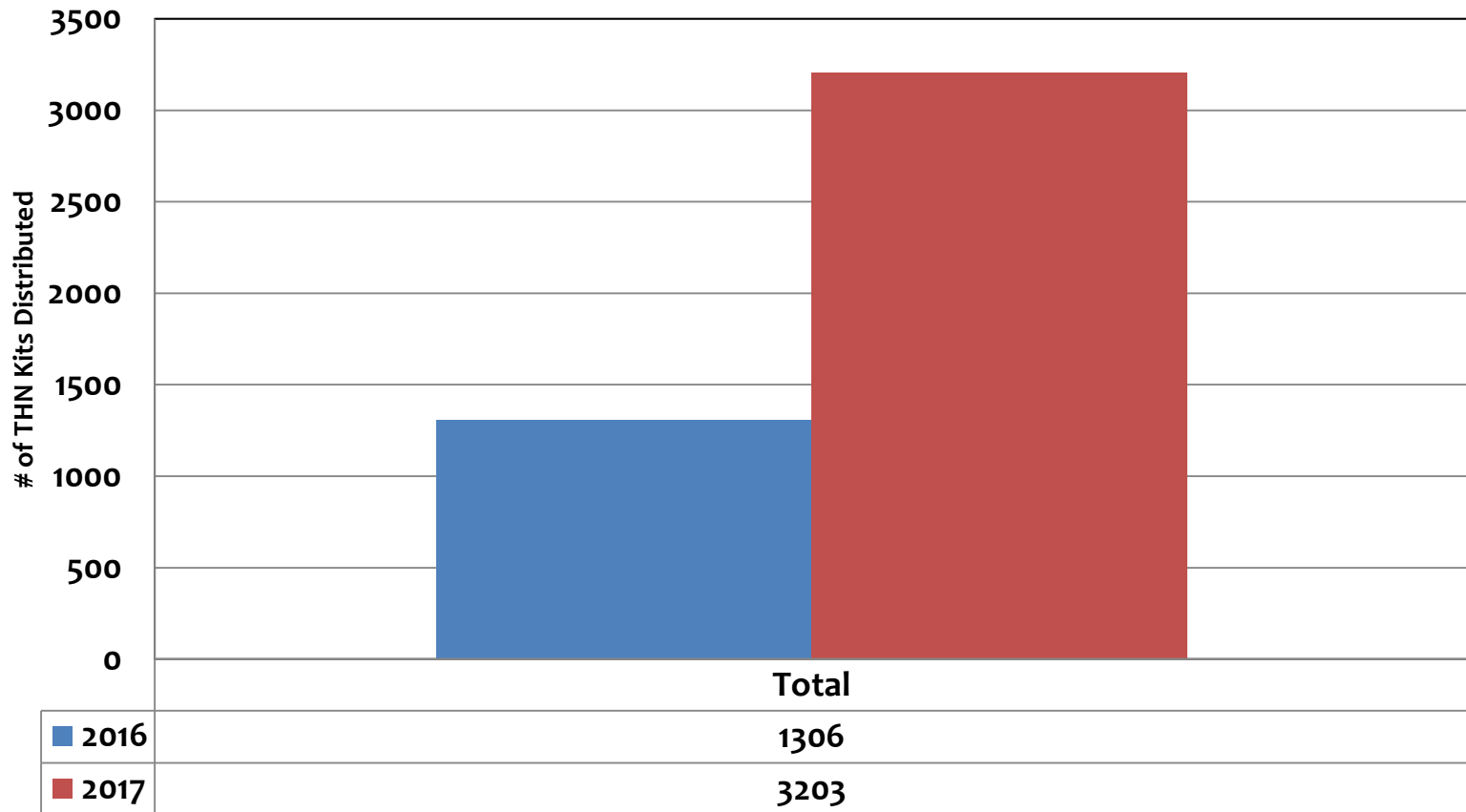
Staff Training Module

Take Home Naloxone Program

Distribution and Dispensing of Take
Home Naloxone Kits

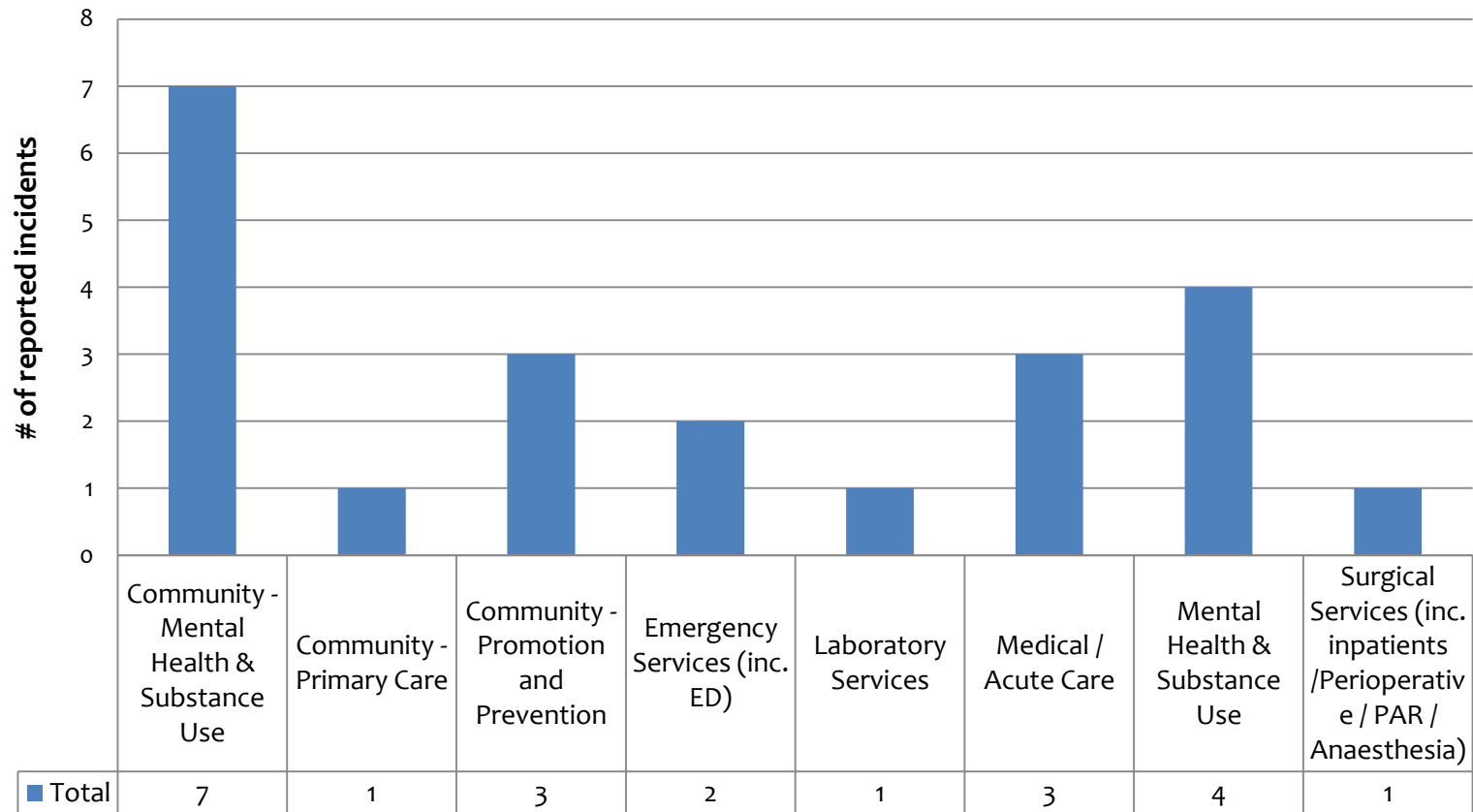
Take Home Naloxone - distribution

THN Kit distribution by IH programs



Overdose incidents

Overdose incidents reported through *Patient Safety Learning System* (n = 22)



Questions

